



NON PAPER

UN/CEFACT Project Proposal

Reference Data Model for Cross Border Data Exchange

1. Objectives

1.1 Purpose

In May 2006 UN/CEFACT, in cooperation with the World Customs Organization (WCO) organised a Symposium on Single Window Standards and Interoperability. In the conclusions the participants stated that the WCO Data Model and UNeDocs (UN/CEFACT Project P049) are based on a common set of standards. These data models were seen as key tools to harmonise, simplify and automate the data exchange required for cross border data exchange. The participants recommended integrating the UNeDocs and the WCO data model into a single data model. Governments and traders should consider this data model as the reference data model for cross border data exchange (CBRDM).

A reference data model for cross border data exchange is an important instrument to simplify and harmonise data requirements between countries and industry sectors. Countries can define their specific, national data requirements and map those national data requirements against the reference data model. The common subset of data requirements in the cross border reference data model defines the complete information requirements for transactions between these countries. This process is defined in the WCO Single Window Data Harmonization Guidelines and draft UN/CEFACT Recommendation 34.

An internationally accepted reference data model for cross border data exchange will provide significant advantages for traders and administrations:

- Reduction and simplification of data requirements
- Harmonization of data requirements between trading nations
- Simplified data submission and validation: Data can be submitted once and reused in the different documents and processes.
- Simplified document exchange: Business partners can exchange the complete master documents and generate the different trade documents as required
- Automation of data processing and validation

At its 51st meeting under agenda item IV(c) the WCO Information Management Sub-Committee (IMSC) discussed the CBRDM concept. Members agreed that the single

window concept had broad implications for customs, other government agencies and the trade/transport industries. They further noted the pivotal role of customs in that process. At its 52nd meeting, under agenda item (v), IMSC further discussed this matter, and it was determined that the proposal should progress to higher levels within the WCO management structure for endorsement, eventually to the June WCO Council sessions, the highest executive body within the organization. Until that expected outcome, this proposal remains draft from a WCO perspective.

1.2 Scope

The Cross Border Reference Data Model is a joint UN/CEFACT – WCO project. It describes the structure of the most important information required to exchange goods in international trade. This reference data model is generic. Countries will use the reference data model to map their individual data requirements against the CBRDM and generate subsets bilateral or multilateral subsets that meet the common information needs.

The CBRDM will integrate relevant international standards and best practice. In particular it will use UN/CEFACT recommendations for trade documents, such as the United Nations Layout Key, the United Nations Trade Data Element Directory (UNTDDED, ISO 7372:2005), the UN/CEFACT Core Component Library based on ISO 15000 and recommendations and best practice instruments developed by the WCO such as the revised Kyoto Convention and the SAFE Framework of Standards. The data model will be based on the UNEDocs Workbase 2.0 and the WCO data model version 2.0. It will combine the strength of both underlying data models.

The UNEDocs and WCO data models are of critical importance for future versions of the CBRDM.

2. Deliverables

The project will deliver a core component based data model for cross border data exchange including a high level Business Requirement Specification and a Requirements Specifications Mapping.

A first deliverable of the project will be a strategy to integrate WCO data requirements into the core component based data model.

After the completion of the Open Development Process review phase the project will promote the implementation of the CBRDM in a stepped approach.

3. Functional Expertise

Preparation of the joint project requires competencies in the area of business and information modelling, national and international trade data requirements, and border regulatory requirements.

4. Geographical Focus

The geographical focus is global with due consideration for customisation.

5. Initial Contributions

Initial contributions include the UNeDocs and the WCO data models, the UN/CEFACT Library of core components and the UNTDED. The members of the UN/CEFACT working groups TBG1, TBG2, TBG3 and TBG15 have expressed their willingness to participate in the project. TBG4 (Data Model Project Team, DMPT) will initiate the project within the CEFACT structure. This means that TBG4 will have an ongoing responsibility to report progress, and to work in close cooperation with the above and other UN/CEFACT groups as well as relevant international organizations. The World Customs Organization is expected to support the project through the DMPT, although the exact nature of how the various proposed project component parts will interact with the DMPT is yet to be described.

6. Statement of Resource Requirements

Contributors in the project shall provide for their own participation. To the extent possible the project team will use Internet based communication tools to limit the need for physical meetings.

7. Time Frame and Completion

The first meeting of the project group is planned to take place on the occasion of the UN/CEFACT Forum in Dublin, Ireland in March 2007. The project team will develop a resource plan and timetable for the deliverables.

8. Project structure - Project Leader and Team Members

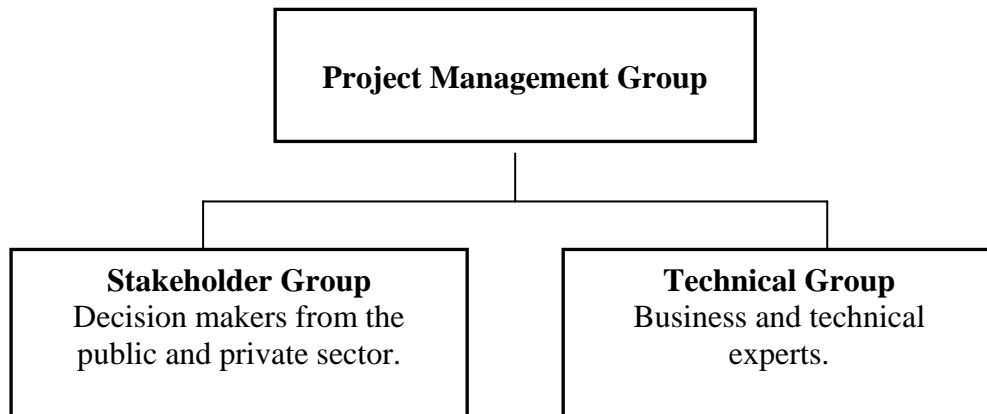
The project will be composed of a Project Management Group (PMG), a Stakeholder Group (SG) and a Technical Group (TG):

- **Project Management Group (PMG):**
The PMG is responsible for the overall management of the project. It is composed of the Project Leader, Co-Project Leader, and the project Secretaries.

- **Stakeholder Group (SG):**
The SG is a group of decision makers from the public and private sector with vested interest for the development and implementation of the CBRDM. The group will guide the development of the CBRDM, promote the deliverable and to find resources and funds. Individuals that volunteered for the Stakeholder group in the May 2006 UN/CEFACT Symposium will be invited to join this group. Membership to this group is open. The structure of this group will be discussed on the Dublin Forum.

- **Technical Group (TG):**
The TG is a group of business and technical experts. One Editor each from UN/CEFACT and from WCO will lead this group. The Group will develop the

CBRDM and promote the integration of the CBRDM into the deliverables of the DMPT and the UN/CEFACT Forum. Membership to this group is open.



The Project Management Group will be composed as follows:

Project Leader: **Mr Mats Wicktor**, Swedish Customs
Co-Project Leader: **Mr Robbie Howard**, DHL
Secretary: **Mr Markus Pikart**, United Nations, ECE
Mr Hans Jeppsson, Swedish Customs
Editors: **Mr Michael Dill**, CEFACT TBG2 Chair, GEFEG
Mr Gareth Lewis, World Customs Organization,

Members of the other groups are yet to be determined.

9. Reporting

Project will report to:

- UN/CEFACT using UN/CEFACT reporting procedures for Forum projects
- The Information Management Sub-Committee (IMSC) through the Data Model Project Team (DMPT)